



SOUL ESTATES

SALES & LETTINGS

TO LET - 2 BEDROOM TOWN HOUSE

Villiers Street, Willenhall WV13 1DF

£850 PCM

Soul Estates are proud to present this newly converted, two bedroomed town house To Let. This perfect family home is situated in a very popular area of Willenhall. Situated near Willenhall Town Centre with good schools, local amenities and transport links and close to New Cross Hospital and Bentley Bridge Leisure Park.

The property offers an entrance hall with rooms going off to the spacious first lounge, family kitchen included and downstairs WC. Kitchen with a range of wall and base units to match, splashback tiling, electric hob and oven with under counter fridge and washing machine included.

Stairs leading to the first-floor landing which leads off to, two double bedrooms and a family shower room. The property also benefits a low maintenance rear garden with gated access to the rear for off-road parking and ample on-street parking.

✓ **NEWLY CONVERTED TOWN HOUSE**

✓ **2 DOUBLE BEDROOMS**

✓ **NEWLY FITTED KITCHEN**

✓ **OFF-ROAD PARKING TO THE REAR**



WWW.SOULESTATES.CO.UK | 0121 647 6779







SOUL ESTATES

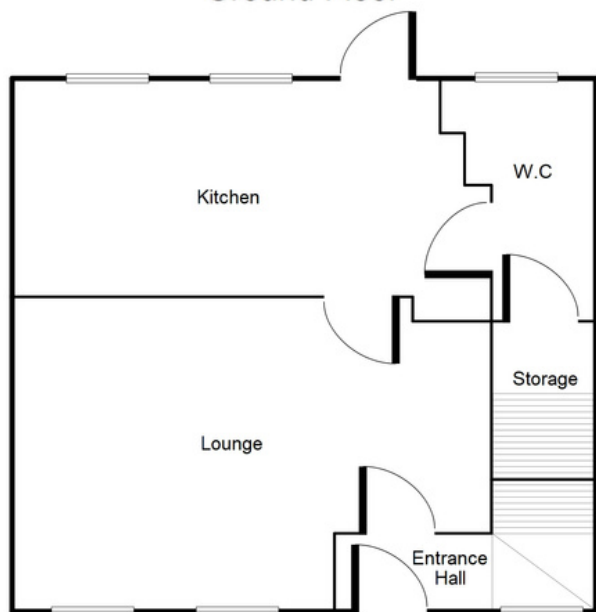
SALES & LETTINGS

TO LET - 2 BEDROOM HOUSE

Villiers Street, Willenhall WV13 1DF

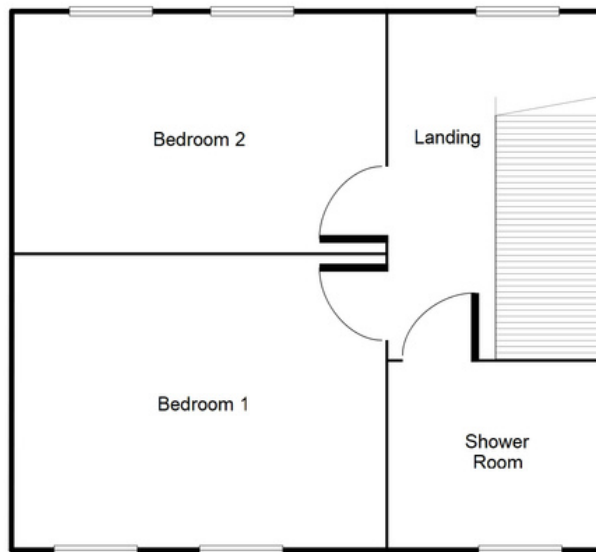
£850 PCM

Ground Floor



This floorplan is just an example, this is not to scale.
Please see description for exact room sizes.
(c) Soul Estates

First Floor



This floorplan is just an example, this is not to scale.
Please see description for exact room sizes.
(c) Soul Estates

Entrance Hall

3' 1" x 8' 2" (0.94m x 2.49m)

Lounge

11' 2" x 15' 5" (3.40m x 4.70m)

Kitchen

6' 0" x 15' 5" (1.83m x 4.70m)

W.C.

6' 8" x 2' 9" (2.03m x 0.84m)

Upstairs Landing

11' 1" x 5' 11" (3.38m x 1.80m)

Shower Room

5' 9" x 5' 11" (1.75m x 1.80m)

Bedroom 1

9' 6" x 12' 1" (2.89m x 3.68m)

Bedroom 2

7' 6" x 12' 1" (2.28m x 3.68m)



SOUL ESTATES

SALES & LETTINGS

CONTACT US

Soul Estates
20 Great Bridge
Tipton
DY4 7HA

0121 647 6779

www.soulestates.co.uk

WWW.SOULESTATES.CO.UK | 0121 647 6779